

Mas se pangpang Influenza (flu) Top Ac Kisensiyuk

Mas Flu pangpang influenza el mas se su ku in fasrelik ke infulwen Oktopa nuke May fin an United States ac territories pac we.

Pa inge kutu kisensiyuk ma kacna siyukyuk ke flu ac top nukac kom in lisringyukyuk liki mas se inge ke yac inge.

Mas flu se inge fasrelik fuhkac?

Mas flu uh fasrelik ke tultul srisrik ma tuku ke pacl se mwet se kof, sinac, ku sramsram



Meac akul ke munun mwet se ma akkalemeye la mwet mas flue?

Mwet ma masak ke flu kacna pula ku nufon ahkul ke macnolos: fusrfusr ku oana in fusrfusr/ouhu, kouf, kuracrac kacpinsrulyac, fwefun, fonfon infwe, ngal musul kac ku ngal macno, insufngal, kac ullac ac Kutu pacl uh woht ac foksoror (kacna siyak nu sin tulik srisrik liki mwet matu).



Efu ku ngan eis kosrkor mas?

Pulan pacl lun flu siyak ke Oktopa nuke May. Pacl se ma mwo omeet in eis kosrkor mas nuke flu pa ke fall ku winter in sifacna lusrungak liki pacl in mas lun flu.



Efu ku ngan eis kosrkor mas nuke flu?

Kosrkor mas nuke flu pa ma se ma mwo omeet in lisringkomyak ac mwet kom lungse liki flu ac ma upac tuku kac. El ku pac in aksrikyela ma sensenkackom inyuk ke flu, ku in som kauli lom ono ku in misa.

In eis in yok ke mwe fahkak ke ma mwo ke kosrkor mas nuke flu, som nuke:

[cdc.gov/flu/prevent/vaccine-benefits.htm](https://www.cdc.gov/flu/prevent/vaccine-benefits.htm)

Su fal in eis ke kosrkor mas nuke flu uh?

Mwet nukewa enenu in eis kosrkor mas nuke flu. An se pangpang Center lun Disease Control ac Prevention (CDC) orella fahk ku la mwet ma matwac malem 6 ku matu liki in eis kosrkor mas nuke pacl in mas flu se inge, yok na nu selos ma masmas ac fusacsr in weack flu. Kosrkor mas nuke flu oasr fahk ku mu mutan pitutu in wi eis.

Su ma sensenkinyuk mu fusacsr in weack flu?

Oana sie mwet ku in weack flu, tusruktu mwe sensen yok nu sin pihsen mwet pus pa nuke tulik srisrik, tulik fusr, mwet ma yac 65 ac matu liki, mutan pitutu ac mwet ma oasr mas lun macnolos ku munas an in kosrkor mas lalos. Ouyac se ma mwo omeet in kosracla mas upac ma oana flu by in eis ono in kosrkor mas nuke flu ke yac nukewa.

Piyac ngeac kacinin ono in kosrkor mas nuke flu?

Ono in kosrkor mas nuke Flu ituk ke mwe fakfuk nuke pohun mwet ku ke spray nuke infen mwet uh. Fakfuk nuke flu se inge akkeyeyuklac nu sin mwet malem 6 ku matu liki. Nuke spray nu infwen mwet uh akkeyeyukla nu sin mwet yac 2 nuke 49 matwac. Oasr pac fakfuk nuke flu ma siena orekla la uh su wi na an oreklac we.

Oasr pac mwe fahkak ma ku in koneyukyuk ke Kosrkor mas lun CDC Seasonal Flu ke an se inge: [cdc.gov/flu/prevent/flushot.htm](https://www.cdc.gov/flu/prevent/flushot.htm)



Tuku Oyac Me: Centers for Disease Control and Prevention (cdc.gov)

APIAHF
ASIAN & PACIFIC ISLANDER
AMERICAN HEALTH FORUM

This publication was made possible by cooperative agreement CDC-RFA-IP21-2106 from the Centers for Disease Control and Prevention of the U.S. Department of Health and Human Services (HHS). Its contents are solely the responsibility of the authors and do not necessarily represent the official views of CDC/HHS.

Mas se pangpang Influenza (flu) Kisensiyuk Ma Kacna Siyukyuk

Meac ke molin kosrkor mas nuke flu uh?

Molin kosrkor mas nuke flu uh wiwi na healthcare coverage lom. Kom ku in pacngonek insurance company lom an in siyuk la ono in kosrkor mas nuke flu karinginyuk oyac in srik molo ku in wangin molo. Oyacpac, health departments ac an mwet uh fasreni in ono we ku pac sang in tia mol ku in fusacsr molin kosrkor mas se. In ak yokye mwe fahkak, kom ku in reviewiyac molin kosrkor mas ngwe ke [Vaccination Cost ac Flu Guide](https://www.aan-nhpihealthresponse.org) [aa-nhpihealthresponse.org](https://www.aan-nhpihealthresponse.org)



Nga ku in eis oyac kosrkor mas nuke flu?

Kom ku in eis kosrkor mas lom nuke flu ke sie sin an ten inge:

- Pa nuke Primary Care Physicians
- Urgent Care/Minute Clinics
- Pa nuke Federally Qualified Health Centers
- Rural Health Clinics
- Pa nuke Native Hawaiian Health Centers
- Indian Health Service
- Pa nuke Local health departments
- Pharmacies (e.g., Walmart, Walgreens, CVS, Rite-Aid)



Ku nga ac ku in pulakin ma tia fal in sik ke munuk tukin nga eis fakfuk lulap se?



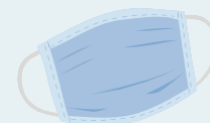
Ono in kosrkor mas nuke Flu el sef ac unwelac mwet uh ke ma oreklac nukac uh. Kutu mwet uh pula ma srisrik ma siena liki ma ono inge orekla nukac pa nuke ngalac pacolos, fusrfusr srisrik, ac ngalngal lun macnol tukin el eis kosrkor mas lal su fah mwolac tukin len ekacsr tohkoh.

Ku nga ku in eis kosrkor mas nuke COVID-19 ac Flu ke pacl sefanna?

Efin oasr mwet mas se fal in wi eis, kosrkor mas nuke flu ac COVID-19 ku in itukyng kewa ke kom som nuke, oana ke fwekyukla ku sin CDC ac Committee Kacreyaclos ke Committee ke Immunizations Practices (ACIP).

Meac sionalac lun flu ac COVID-19

Flu ac COVID-19 tukeni mas ma ku in kutackatelik nu yurin mwet uh ke kut mas kin an in momong lasr uh, tusruktu kacinin faerus pa sramteack. COVID-19 sramteyukyak ke uswacnen wi coronavirus(pangpang SARS-CoV-2) ac wi flu ma srimetak ke uswacnen wi faerus ke flu ma fasrelik ke yac nukewa inmacrlon mwet uhl.



Ma Tuku Oyac: Centers for Disease Control and Prevention (cdc.gov)

APIAHF
ASIAN & PACIFIC ISLANDER
AMERICAN HEALTH FORUM

In tafwela AA ac NHP/PI lungasyukla ma orekmakinyuk, nunak munas mutacta nuke National AA ac NH/PI Health Response Partnership Webpage ke: www.AA-NHPIHealthResponse.org

This publication was made possible by cooperative agreement CDC-RFA-IP21-2106 from the Centers for Disease Control and Prevention of the U.S. Department of Health and Human Services (HHS). Its contents are solely the responsibility of the authors and do not necessarily represent the official views of CDC/HHS.