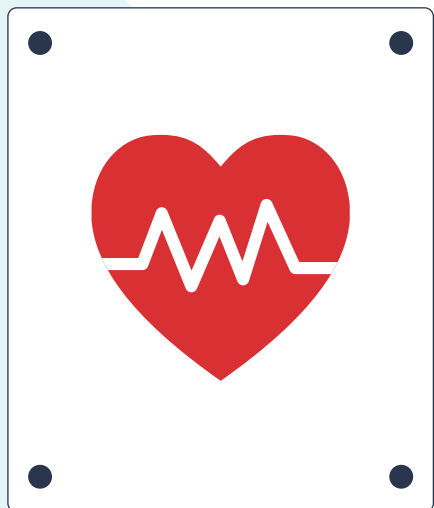


O le ā le KOVITI Fa'aumiumi?

O le Koviti Fa'aumiumi ua fa'amatalaina fa'alaua'itele o ni fa'ailoga, āuga, ma ni tulaga fa'aauau pea ma fa'atupula'ia pe a uma atu a'afiaga ogaoga o le KOVITI-19.





E mafai fo'i ona ta'ua o le....

A'afiaga ina ua uma le KOVITI

KOVITI-Fa'aaau

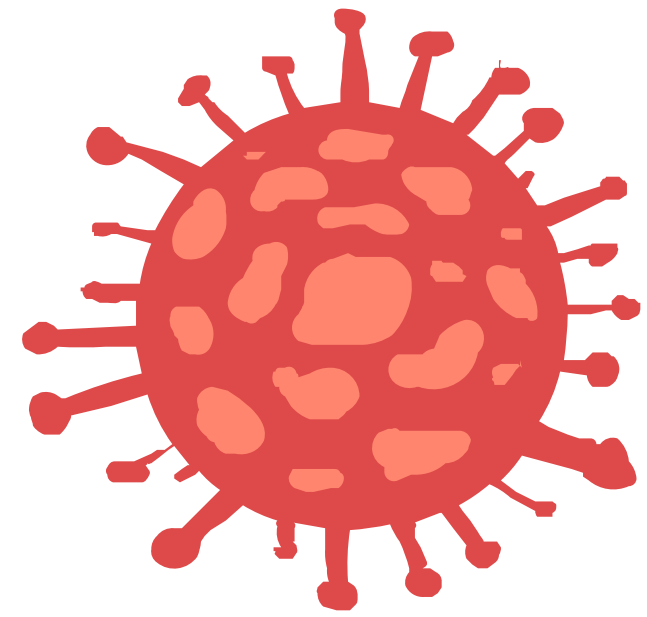
**Tulaga Matuiā pe a Mavae le
KOVITI-19**

**A'afiaga Fa'aumiumi
o le KOVITI**

**KOVITI e Tumau mo
se Taimi Umi**

KOVITI Faaumiumi O Faamatalaga Moni





E tele lava ina tupu le KOVITI Fa'aumiumi i tagata na matua'i ogaoga le a'afiaga i le KOVITI-19,

ae o SO O SE TASI lava ua aafia i le vairusi lea e māfua ai le KOVITI-19 e mafai ona maua ai le KOVITI fa'aumiumi.

1

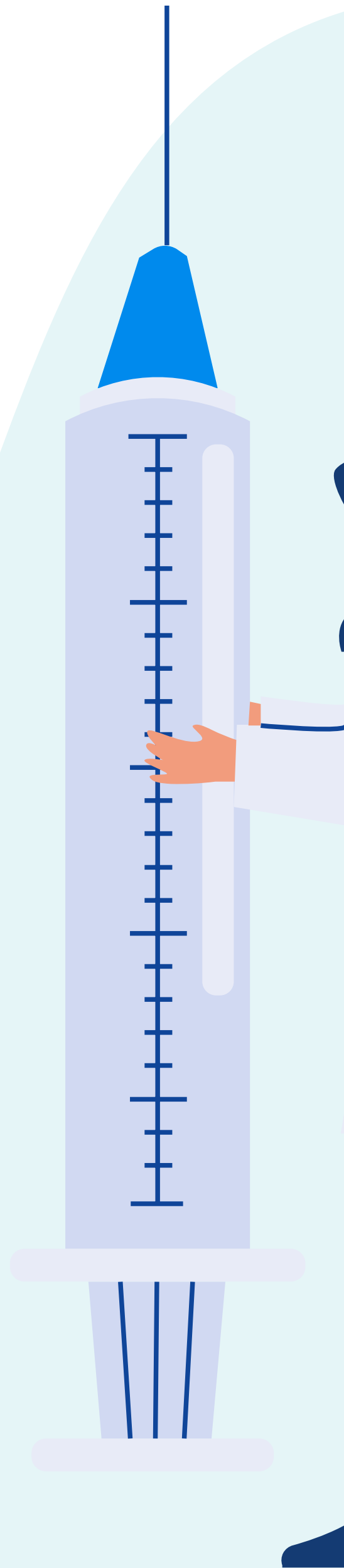
FA'AMATALAGA MONI

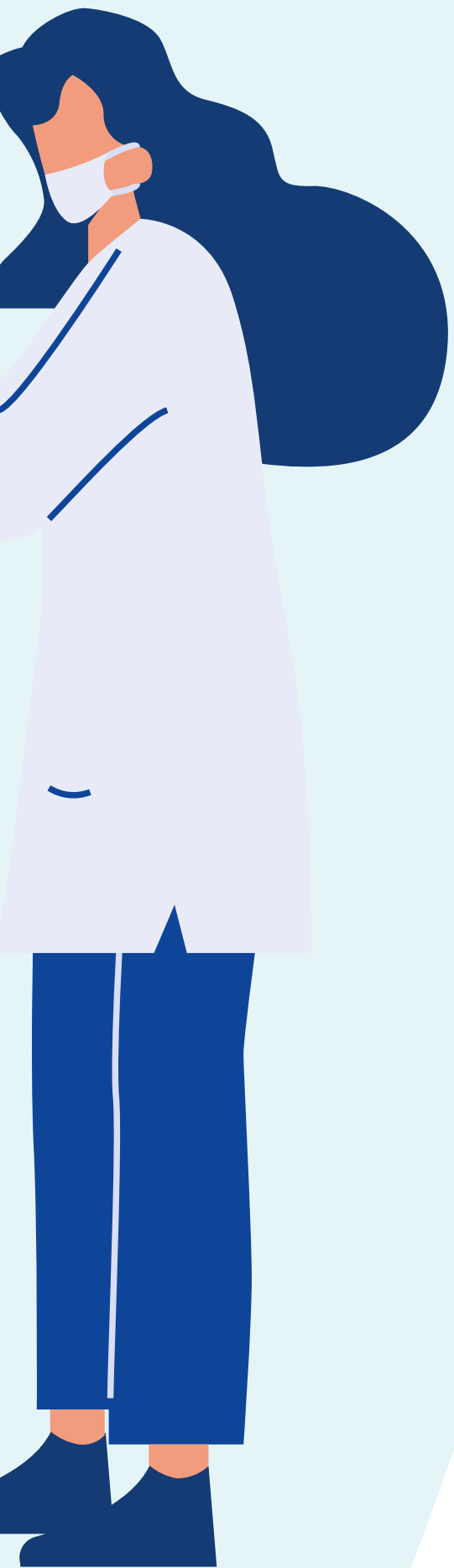
O tagata e le'i faia ni tui puipuia e tete'e atu ai i le KOVITI-19 ma ua latou a'afia i le fa'ama'i, e ono maualuga lo latou afaina i le mauaina o le KOVITI Fa'aumiumi.

pe a faatusatusa ma tagata ua faia le tui puipui.

2

FA'AMATALAGA
MONI





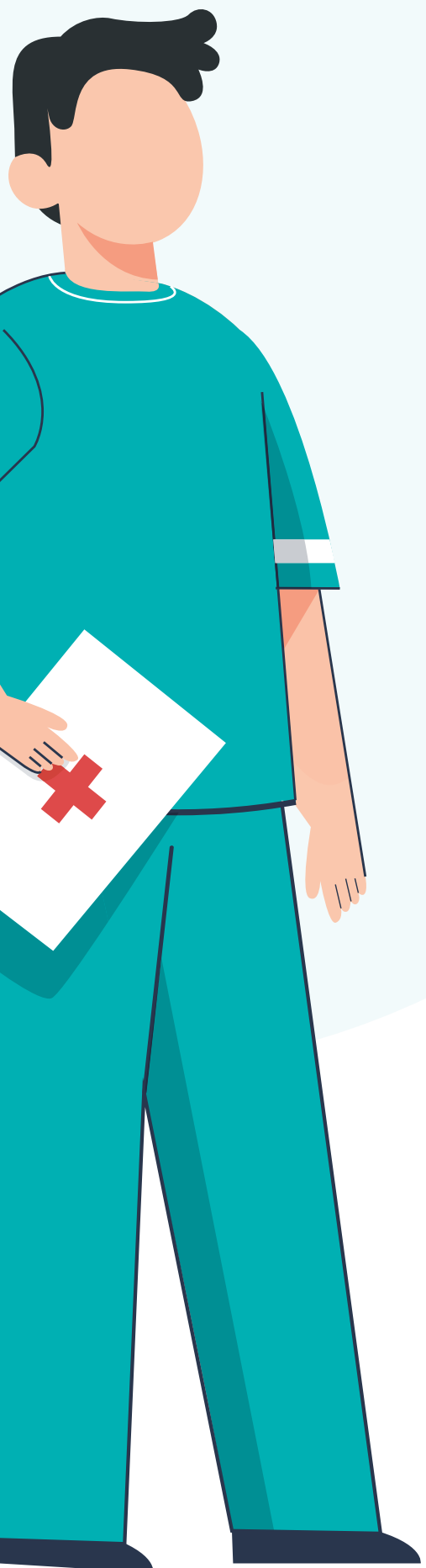
E mafai ona toe fa'atelele ona a'afia tagata i le vairusi o le korona.

O so o se taimi lava e aafia ai se tagata pe toe aafia ai i le SARS CoV-2, e i ai sona tulaga lamatia o le maua ai o le KOVITI Faaumiumi.

3

FA'AMATALAGA MONI





E ui o le to'atele o tagata ua maua le KOVITI Faaumiumi ua i ai faamaoniga o le aafia i le po o le mauaina o le gasegase o le KOVITI-19,

i nisi o tulaga, o se tagata e maua i le KOVITI Faaumiumi atonu e le'i faamaonia se siaki ua ia maua ai le vairusi pe iloa fo'i sa aafia i le faama'i.

4

FA'AMATALAGA MONI

KOVITI
FA'AUMIUMI
Fa'ailoga ma
Āuga





ĀUGA

MASANI



Lēlavā po o le vaivai lea ua fai ma fa'alavelave i gaioiga o aso ta'itasi



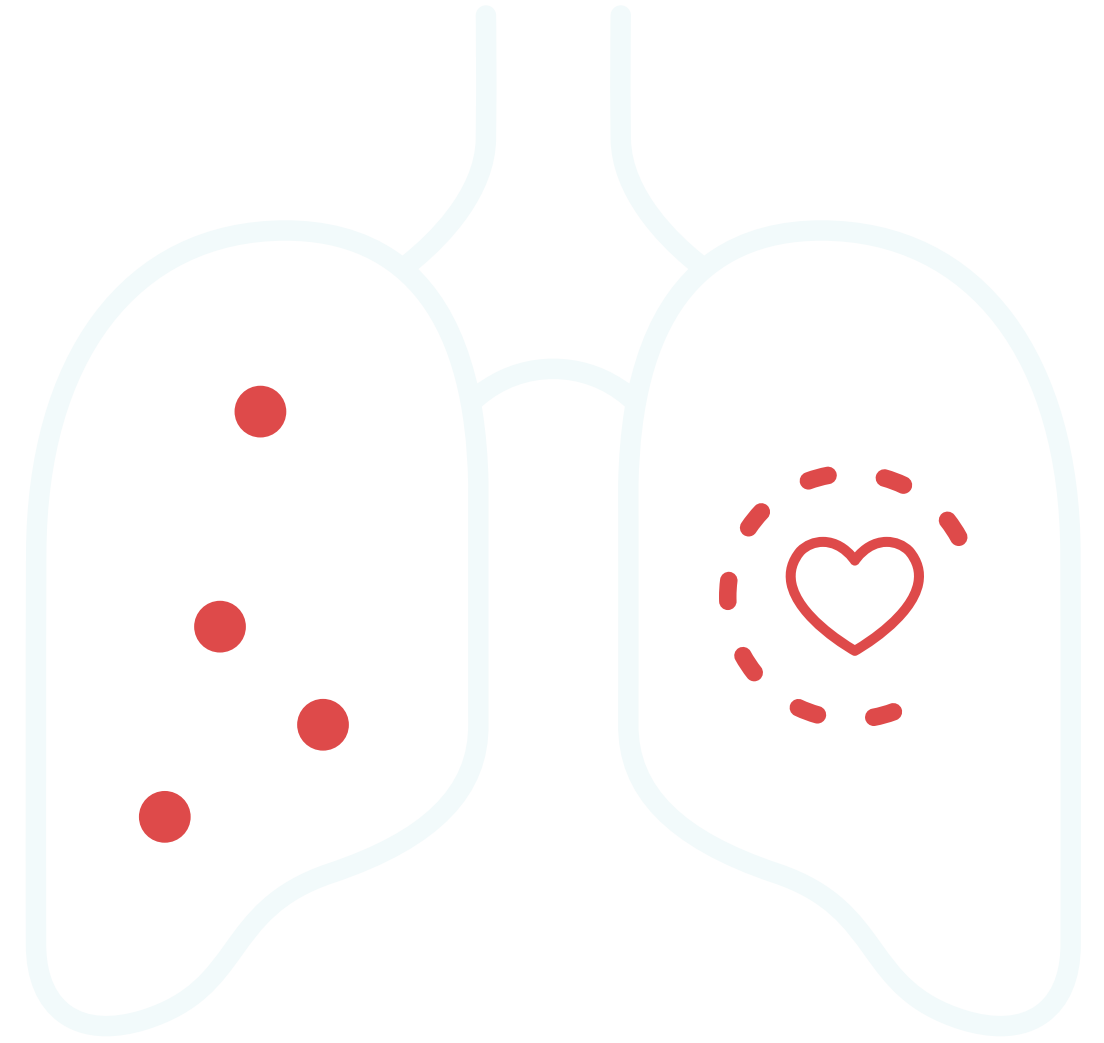
O le a fa'ateleina le afaina i āuga pe a uma tamafaiga fa'aletino po le mafaufau (ua tā'ua o le “post-exertional malaise” po o āuga e fa'atuai ona tupu)



Fiva

ĀUGA

MĀNAVA MA LE FATU



Faigatā ona mānava po o tau lē mafai ona mānava



Tale



Tigā le fatafata



Tātāvale o le fatu

(heart palpitations po o suiga o le tātā o le fatu)

ĀUGA

FAI'AI MA NEULA



Faigatā ona mafaufau po o le taula'i atu i se mea (o nisi taimi e ta'ua o le "puao o le fai'ai") (brain fog)



Tigā le ulu



Niniva pe a e tū i luga (tau matapogia)



Fa'alagona o le mā'ini'ini o le tino



Suiga i le manogi po o le tofo



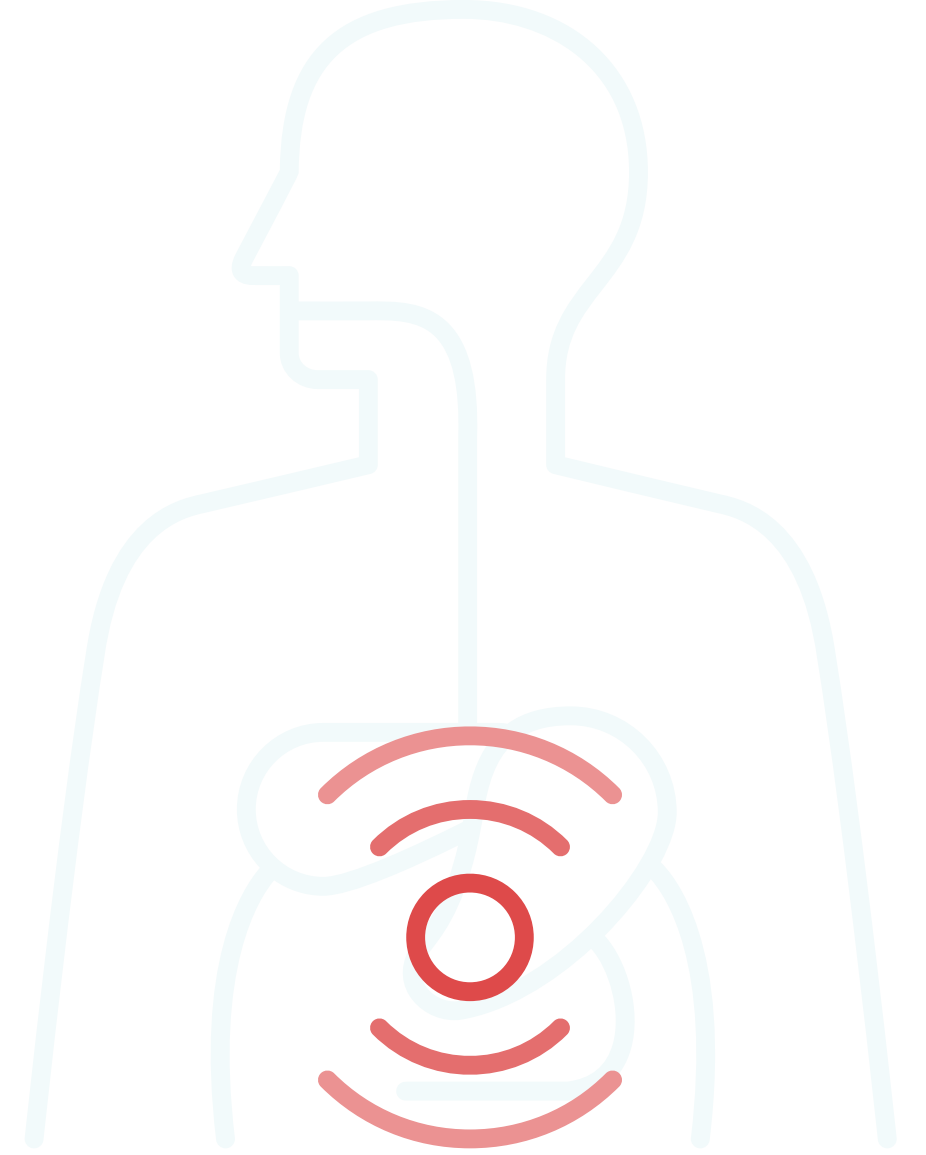
Fa'afitauli tau moe



Lotomafatia ma le matuā popole

ĀUGA

MANAVA



Manava tatā



Tigā le manava

ĀUGA

ISI



Tigā sooga po o maso



Pata o le tino



Suiga i le gasologa o le ma'i masina o le fafine/tama'ita'i (se'i tulou)